

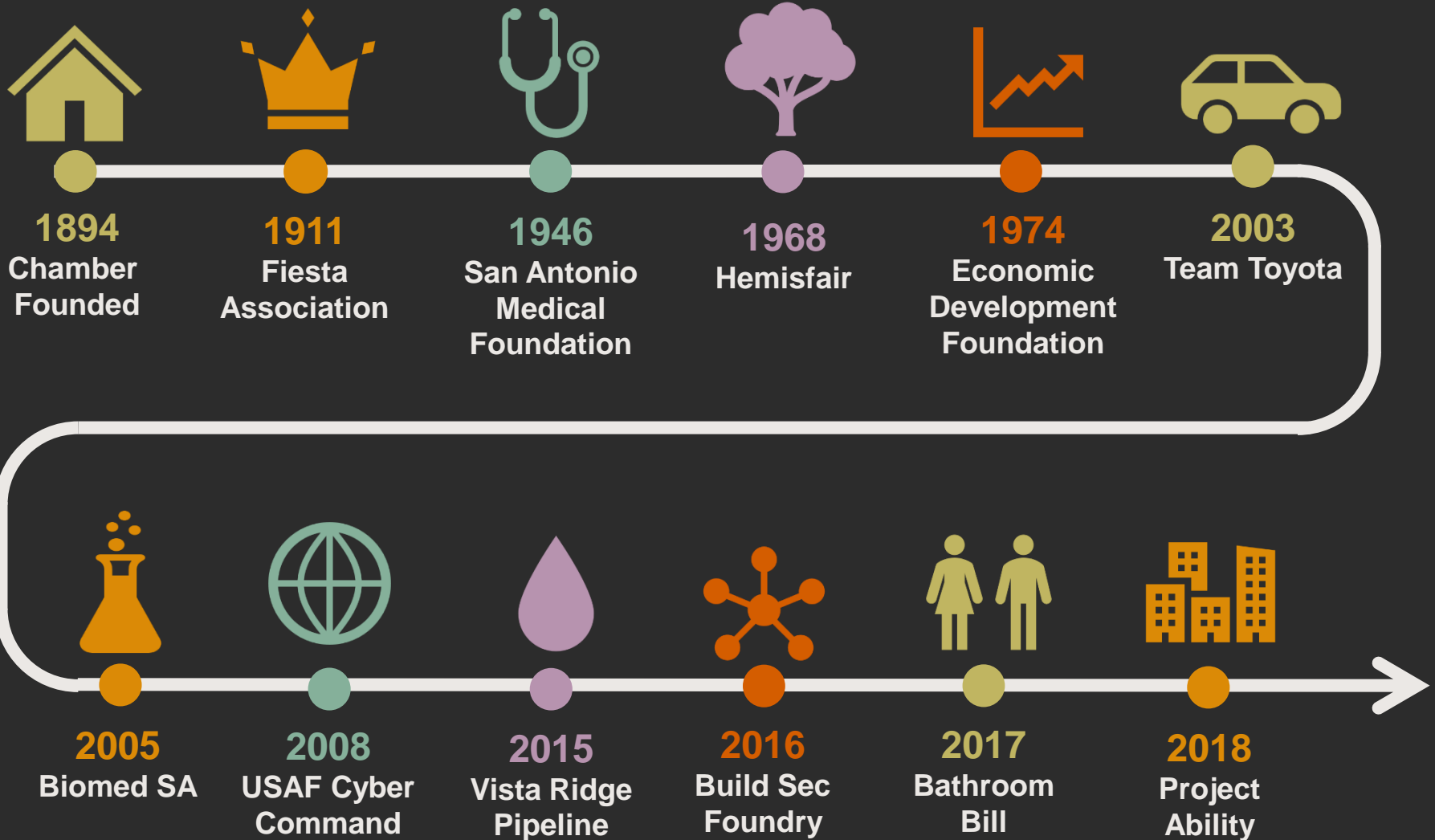


# SAN ANTONIO CHAMBER OF COMMERCE

**UTSA Faculty Senate  
October 11, 2018**

**Lisa Marie Gomez, VP Education and Workforce Development**

# Access - Influence - Collaboration



# 2018 CHAIRMAN



**Shaun Kennedy**

San Antonio Regional Chairman  
Texas Capital Bank

# 2019 CHAIRWOMAN



**Paula Gold Williams**

President/CEO  
CPS Energy

Economic  
Development  
Council

Operating  
Council

Military Affairs  
Council

# COUNCILS & COMMITTEES

Education and  
Workforce  
Development  
Council

Cybersecurity  
Council

Public Policy  
Council

# EDUCATION & WORKFORCE DEVELOPMENT COUNCIL



Advocates for improving alignment of the cradle-to-career educational pipeline - from early childhood to K-12, to post-secondary education, and into the workforce.



# Access – Influence – Collaboration For Prosperity

Classroom to  
Career

Voices of  
Support for  
Downtown  
Campus

Upskilling  
Workforce

Industry &  
Economic  
Impact  
Reports

Advocating for  
Public Policy

College/Employer/  
Research  
Partnerships

# Let's Strengthen Our Partnership

**UTSA**<sup>®</sup>



SAN ANTONIO CHAMBER  
OF COMMERCE

Lisa Marie Gomez

[lmgomez@sachamber.org](mailto:lmgomez@sachamber.org)

210.229.2134

[sachamber.org](http://sachamber.org)